

SUPPORTING OUR BULOKE COMMUNITY

We acknowledge the traditional owners of the land and their role in caring for country in the Shire of Buloke. We pay our respects to their Elders past and present and emerging, and to traditional owners from other communities who may be impacted by flooding in our Shire.



Mayor Cr Daryl Warren at Charlton with Municipal Emergency Response Coordinator, Acting Senior Sargeant Roberta Barry.

Thank you to the residents of Buloke, your families, visitors and friends for the extraordinary and overwhelming efforts over the past weeks, working alongside the emergency management team, in responding to the threat of floods.

The camaraderie that has been shown has brought a tear to the eye at times, and we should all be proud of how we've pulled together with Council, Victoria Police, Country Fire Authority, State Emergency Service, Red Cross, catchment authorities and other support agencies.

While river rises and flooding continue in areas of Buloke after recent rain, there's no doubt our combined mitigation efforts have helped to minimise direct impacts to our towns.

However, the immediate threat of severe weather and floods has not passed. Our roads infrastructure has suffered, and those in outer lying areas such as our primary producers, are contending with ongoing impacts of humid and wet conditions.

It is the responsibility of all of us, to understand that where there is a risk of flood affecting life and property, that we are well prepared before an event occurs.

So, I urge you to take up the challenge – to ask, learn,

plan and prepare. Hang onto this information, put it under a magnet on your fridge for easy reference for when you need it.

There's been some great conversations with our communities, listening to local knowledge and sharing of the microphone.

These robust discussions have taken us a long way forward in preparing emergency works and planning ahead. While we have the appetite for it, let's continue them.

If you're directly affected by this declared disaster, there's lump sum payments and ongoing, short-term allowances to help you. You may be eligible for more than one of these.

Our Wycheproof Emergency Relief Centre at the Wycheproof Stadium at the Wycheproof P-12 school in McKenzie Crescent, remains open at this time for anyone wanting to seek shelter, have a drink, something to eat and a chat about what support is available.

More grants will be available and we will be sharing this information with the community.

Know that we here to support you, wherever we can.

Mayor Cr Daryl Warren



STAY INFORMED



EMERGENCY INFORMATION

Vic Emergency Webpage
emergency.vic.gov.au
Vic emergency app & hotline (1800 226 226)



EMERGENCY ASSISTANCE FROM VICSES

Call 132 500



LIFE-THREATENING EMERGENCIES

Call Triple 000



ROAD CLOSURES VICTRAFFIC

traffic.vicroads.vic.gov.au



BUREAU OF METEOROLOGY (BOM)

bom.gov.au



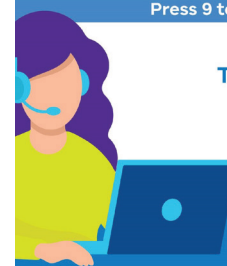
BULOKE SHIRE COUNCIL

1300 520 520 to report road damage or assistance.



FLOOD RECOVERY HOTLINE 1800 560 760

Press 9 to speak to an interpreter



The Flood Recovery Hotline is open every day
7:30am – 7:30pm



Phone: 1300 520 520
www.buloke.vic.gov.au



SUPPORTING OUR BULOKE COMMUNITY

RETURNING HOME

Hazards and floodwaters

Do not swim or allow children to swim or play in floodwater.

Health and safety issues include:

- the risk of drowning, or injury from sharp objects and other physical hazards
- the risk of electrical shock from downed power line
- illness if floodwaters contain faecal material (poo) from overflowing sewage systems and agricultural waste, or chemicals from industrial wastes
- skin infections from contact of open wounds with contaminated floodwaters
- tetanus from tetanus bacteria in soil, dust or manure entering through a break in the skin
- mosquitoes growing in water and some types can transmit mosquito-borne disease.

Keep children and pets away from your property until clean-up is completed.

Hazards when entering your property

- Gas or electricity supplies on your property may be damaged – these hazards need to be confirmed safe by a qualified electrician or plumber.
- The structural integrity of your home and structures may be affected – this needs to be declared safe by a qualified building surveyor.
- If gas has collected inside buildings, do not smoke or use matches, lighters or other open flames. If possible, use flashlights or other battery-operated lights instead of candles.
- Mosquitoes can breed rapidly and become a nuisance. Mosquitoes also transmit mosquito-borne diseases –

cover your skin with light coloured clothing with long sleeves and pants. Use insect repellent containing DEET or picaridin on all exposed skin.

- Be careful of wild animals including rodents, snakes or spiders which may be trapped in and around your home. Cuts from broken glass and debris are also a problem. Always wear sturdy waterproof boots and rubber or leather gloves.
- Pets and other animals may have died and need to be removed. For advice on safe disposal contact Buloke Shire Council or your vet.
- Buildings may have asbestos-containing material. Take all necessary precautions when handling asbestos-containing debris. Extensive demolition, repair and renovation work involving asbestos-containing materials should be carried out by licensed asbestos workers.
- Flooding can cause mould growth, which must be cleaned up before moving back into your home.
- Flooding may cause sewage to overflow inside your home. Contaminated areas must be cleaned and disinfected.
- Drinking water may be contaminated – do not drink any water unless you know it is safe.
- Food may be contaminated by floodwater or spoiled due to a power failure.

Mental health support

The Victorian Government has announced a \$4.4 million initial package that will support any extra mental healthcare flood-affected Victorians need.

This includes \$500,000 for specialist agriculture organisations, including the National Centre for Farmer Health, to provide dedicated mental health support to primary producers whose properties, livestock or crops were lost in the floods.

It is normal to have strong emotional or physical reactions following a distressing event.

**There is always help available through:
Your Doctor, local mental health professionals
Lifeline – 131 114**

Beyond Blue – 1300 224 636

MensLine – 1300 789 978

Kids Help Line – 1800 55 1800

Parent Line – 13 22 89

Preventing illness

Infectious diseases including gastrointestinal infections and hepatitis A can spread from contact with floodwater contaminated surfaces. Practice good hand hygiene – wash them thoroughly with soap and clean water. For more information visit: betterhealth.vic.gov.au



Beat The Bite

With flooding in much of Victoria, the risk of mosquito breeding is high.

To reduce your risk of being bitten and getting sick, wear long, loose-fitting clothing, use repellents and insect nets.

WHERE YOU CAN GET SUPPORT

Flood Recovery Hotline

Anyone in Victoria can call the hotline for help with finding out what support is available and how to access it, clean-up programs, temporary accommodation, and mental health and wellbeing support.

The recovery hotline is open from 7:30am to 7:30pm every day. Need an interpreter? Call the hotline on 1800 560 760 and press 9.

Personal Hardship Assistance Program (PHAP) Emergency Relief Payment.

Who is eligible? – Your household

This support is administered by the Department of Families, Fairness and Housing (DFFH). Visit the DFFH Personal Hardship Assistance Program webpage for more information.

Personal Hardship Assistance Program (PHAP) Emergency Re-establishment Assistance

Who is eligible? – Your household

Call the Flood Recovery Hotline on 1800 560 760 to find out if you can get financial help to return home.

For more information visit the DFFH Personal Hardship Assistance Program webpage.

Australian Government Disaster Recovery Payment (AGDRP)

Who is eligible? – Your household

Information about the payments and eligible LGAs is available at: servicesaustralia.gov.au/disasterevents

Disaster Recovery Allowance (DRA)

Who is eligible? – Your household, small business, and primary producers

Information about the payments and all eligible LGAs is available at: servicesaustralia.gov.au/disasterevents

Small Business Grant

Who is eligible? – Small Business

For more information, call the Business Victoria hotline on 13 22 15.

Concessional loans

Who is eligible? – Primary producers

To register your interest, please go to Rural Finance website www.ruralfinance.com.au.

Transport subsidy

Who is eligible? – Primary Producers

To register your interest, please go to Rural Finance website www.ruralfinance.com.au.

Primary Producer Grant

Who is eligible? – Primary Producers

To register your interest, please go to Rural Finance website www.ruralfinance.com.au.

Additional support for Buloke:

Fees waived for flood waste

The waste levy for flood waste and the gate fee usually charged by site operators will be waived for Buloke Shire residents until 31 December 2022.

Community Recovery Officers

An investment of \$6 million will station Community Recovery Officers in Buloke to help identify the recovery needs of individuals and families.

Community Sport Emergency Flood Assistance

A Community Sport Emergency Flood Assistance Program will deliver an initial payment of \$5,000 to directly-affected sporting clubs across the state, helping them meet some initial upfront costs of item and equipment replacement to help communities get back out on the field as soon as possible. Clubs can apply for the grants from Friday, 21 October.

Community Mental Health Support

Neighbourhood Houses and Aboriginal Community-Controlled Organisations in affected areas will receive \$400,000 to run local events, connecting flood-affected residents across communities.

School Mental Health Fund

Children and their families who have been affected by the floods are strongly encouraged to contact their trusted school leaders, who can help them access that care quickly.

SUPPORTING OUR BULOKE COMMUNITY

STAY INFORMED

Victoria State Emergency Service volunteers providing emergency assistance to flood affected communities

Victoria Emergency Service (VICSES) volunteers provide support to communities 24 hours a day 7 days a week 365 days a year. Our volunteers have been on the ground providing flood preparedness advice directly to households at risk prior to floods occurring. They have been working in their communities to provide sandbagging support and putting their lives on the line working with other emergency service personnel to rescue people and their pets when they have been isolated by floodwater. VICSES volunteers ask that community members heed emergency advice to prepare, evacuate if advised to do so and to never drive on flooded roads.



Wycheproof



Donald Brenden Murphy 1mile2go photography



Culgoa



Charlton Ned Zagame



FOR ADVICE ON HOW TO PREPARE FOR FLOODS AND TO FIND YOUR LOCAL FLOOD GUIDE

Visit ses.vic.gov.au



FOR FLOOD AND STORM EMERGENCY ASSISTANCE

Call 132 500



MEDIA INQUIRIES:

SES Media 1300 783 933

Preparing for floods: Sandbagging

Sandbags won't stop floodwater completely, but can reduce the amount of water entering your home or business.

You can access sandbags at your local hardware store to prepare for heavy rainfall and potential flooding.

During significant events, VICSES may also establish sandbag collection points for impacted communities.



Safer Communities – Together

Sandbagging

Council will continue to replenish supplies of sand and sandbags for sandbagging at the following sites for the community. Some sandbags are filled, but bring a shovel just in case.

A huge thank you to those volunteers who have visited these sites to fill bags for others.

- **Charlton:** Shire Depot, Watson St, Charlton
- **Culgoa:** Culgoa Shire Depot, 5-7 Lalbert Rd, Culgoa.
- **Donald:** Donald Shire Depot, Avon Place, Donald
- **Wycheproof:** Wycheproof Golf Club carpark off Calder Hwy.

Flood Eye

Buloke residents are encouraged to download a report about the impacts of flood on their properties.

North Central CMA has developed an online mapping tool – Flood Eye – that enables you to obtain a FREE report that contains flood information specific to your property.

For more information, visit: www.nccma.vic.gov.au/flood-eye. If your residential address is not listed, let the North Central CMA know. Email: floodplain@nccma.vic.gov.au Phone: 03 5440 1896.



FLOOD EYE

Want to help flood affected communities?

Here are some ways you can help:



Financial donations

A financial donation is the best way to assist until it is determined what people need specifically, and this may not be known for some time.

GIVIT is a national not-for-profit that helps coordinate donations and items to make sure people and communities get exactly what they need, when they need it.

You can see what's needed at: www.givit.org.au



Volunteer

Disaster Relief Australia is an organisation that partners with Emergency Management Victoria to organise volunteers to assist with clean-up once flood waters recede.

You can find out more and register your interest at: www.disasterreliefaus.org/vic-flood-recovery

You can also check in with your local neighbourhood house or community op shop to see if they need a hand during this time. We're sure there will be many other opportunities and groups needing assistance, so keep an eye out for where you can pitch in.



Local Road Closures

Buloke Shire Council has been reporting road closures to VicRoads to upload to the VicTraffic website and App.

Please share the VicTraffic link with your friends and family so they may travel safely: <https://traffic.vicroads.vic.gov.au/>

Remember only travel if absolutely necessary. Avoid flooded areas. If it's flooded - forget it!

Visit Council's website to obtain a list of the latest Road closures reported to VicTraffic: <https://www.buloke.vic.gov.au/buloke-shire-council-road-closures>.

Support Agencies

Australian Red Cross website:
www.redcross.org.au

Disaster Legal Help website:
www.disasterlegalhelp.org.au

Salvation Army Australia website:
www.salvationarmy.org.au

Wildlife Victoria website:
www.wildlifelifevictoria.org.au, or call 03 8400 7300.

OTHER WAYS TO GET ASSISTANCE



If you know someone who does not speak English or it is your second language, please call the Translating and Interpreting Service on 131 450 and ask to be put through to the service that you need, including Buloke Shire Council.



If you are deaf, or you find it hard to hear or speak on the phone, you can contact them through the National Relay Service. Visit the National Relay Service website for more information on how to register for National Relay Services.